

# TWO TEMPLE PLACE COMMUNITY SPACES



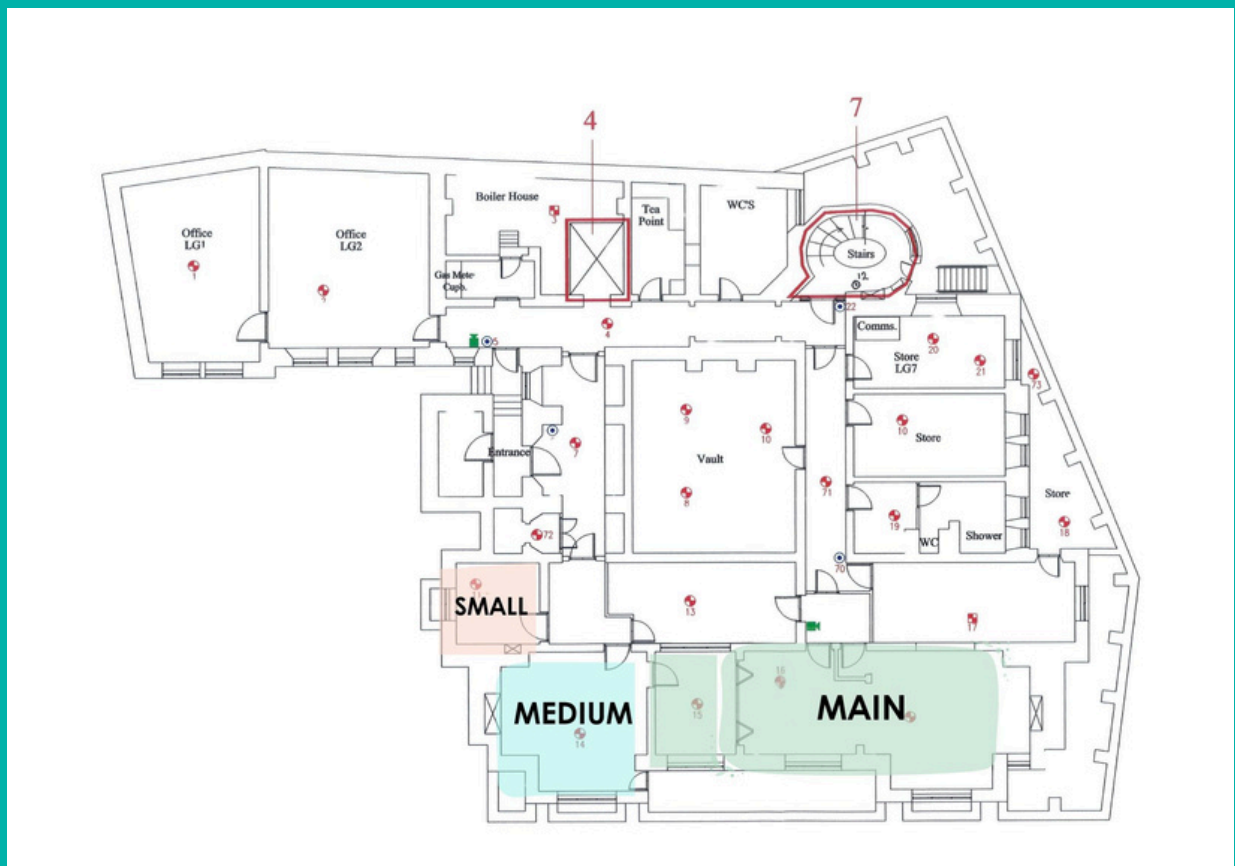
Our community spaces are located on the lower ground floor and can be accessed through a separate entrance if needed.

There are **3 spaces** we offer for hire:

1. **Main Community Space** - Up to 20 people seated at desks, or around 30 people standing. (pg 3-5)
2. **Medium Community Space** - Up to 12 people seated (pg 6)
3. **Small Meeting Room** - up to 4 people (pg 7)

## FACILITIES

- Tea and coffee-making facilities
- Separate bathrooms located on the lower ground floor.
- Projector, speakers, tables, chairs, flip chart, Wifi and TV screen available.





## MAIN COMMUNITY SPACE

Entrance to the  
Main Community  
Space.



Additional  
available space  
next to the Main  
Community Space.

Includes coat  
hooks and storage  
space for bags.



## Two Temple Place Community Space



The Main Community Space can be rearranged as needed.

**20-30 capacity**







Tea and coffee-making facilities within the Main Community space.

Some of the available resource.



## MEDIUM COMMUNITY SPACE



The Medium Community Space - fits up to **12 adults**  
Use of flipchart, wifi, tea and coffee  
Tables and chairs can be rearranged.



## SMALL MEETING ROOM



Small Meeting Room - up to **4 adults**

## CONTACT US

### Community Team

[community@twotempleplace.org](mailto:community@twotempleplace.org)

020 7836 3715

### Two Temple Place

London

WC2R 3BD