

# TWO TEMPLE PLACE COMMUNITY SPACE

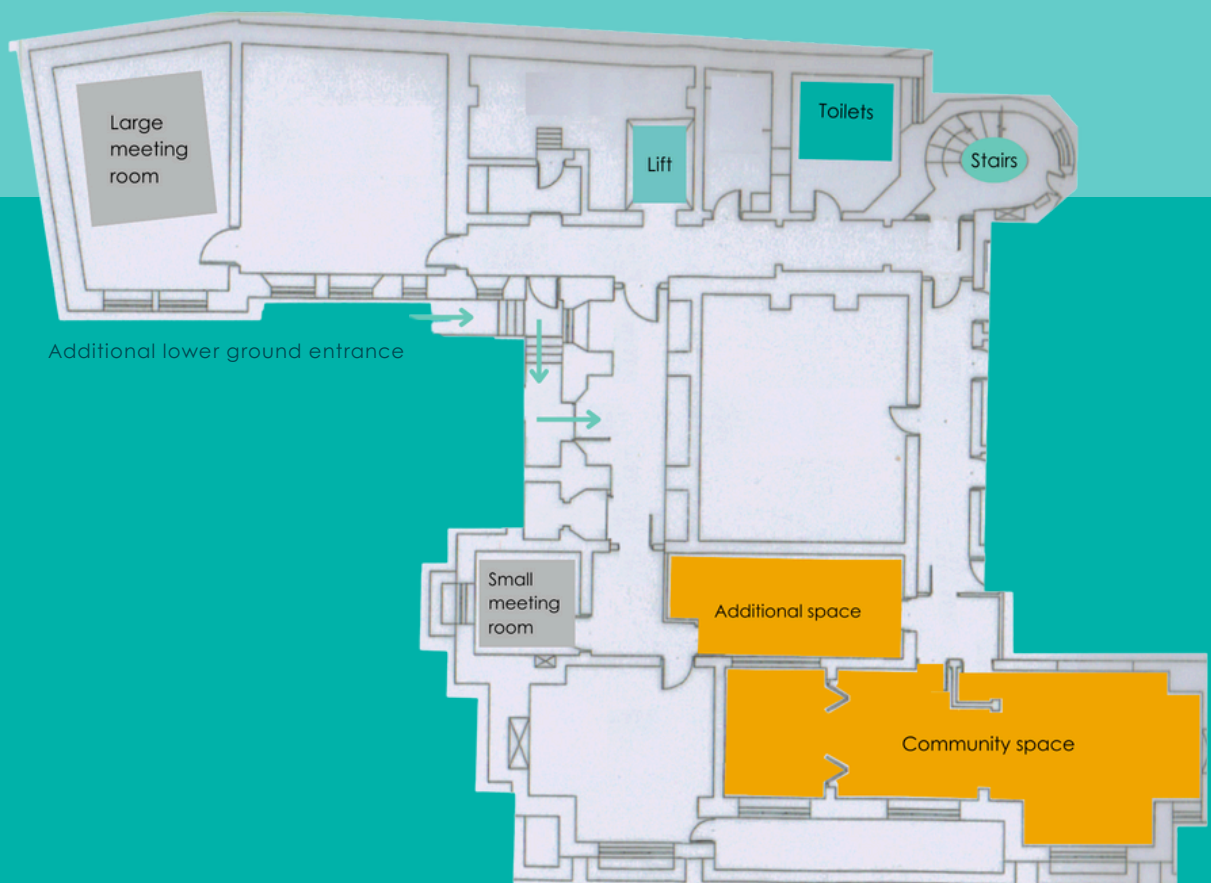


Our community space is located at the lower ground floor and can be accessed through separate entrance if needed.

The space can comfortably accommodate up to 20 people seated at desks, or around 30 people standing.

### FACILITIES

- Tea and coffee-making facilities (p.5).
- Two separate meeting rooms (subject to availability, p.6).
- Separate bathrooms located on the lower ground floor.
- Projector and TV screen available.







Entrance to the community space.

Additional available space next to the community room.

Includes coat hooks and storage space for bags.



## Two Temple Place Community Space



The main Community space.

This space can be rearranged as needed.







Tea and coffee-making facilities within the community space.

Some of the available resources.





Small meeting room  
(subject to availability).

Large meeting room  
(subject to availability).



## CONTACT US

### Community team

[community@twotempleplace.org](mailto:community@twotempleplace.org)

020 7836 3715

### Two Temple Place

London

WC2R 3BD



TWO  
TEMPLE  
PLACE

