

TWO TEMPLE PLACE

family art trail for
experienced explorers

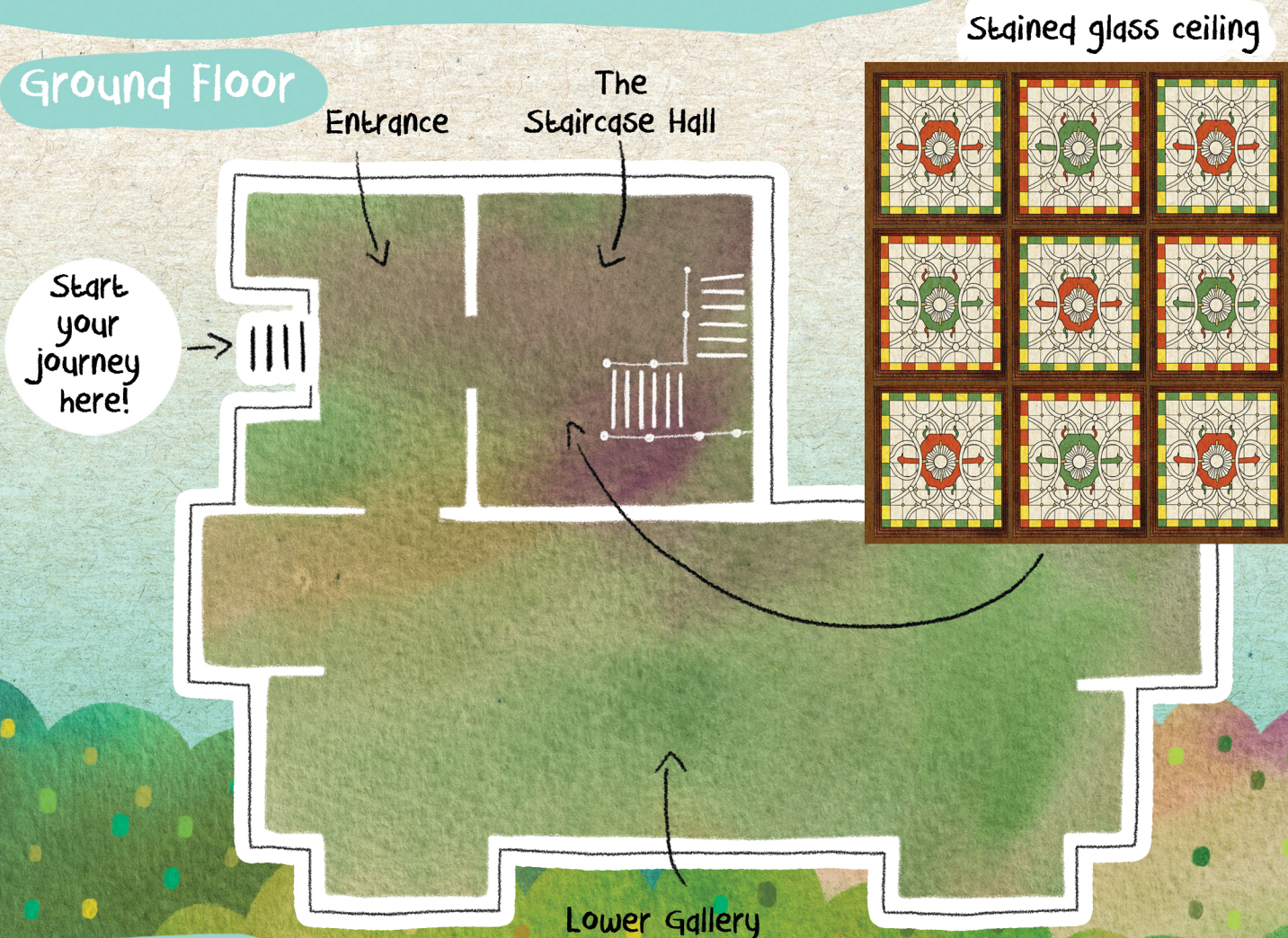


Designed and Illustrated by Edwina Kung

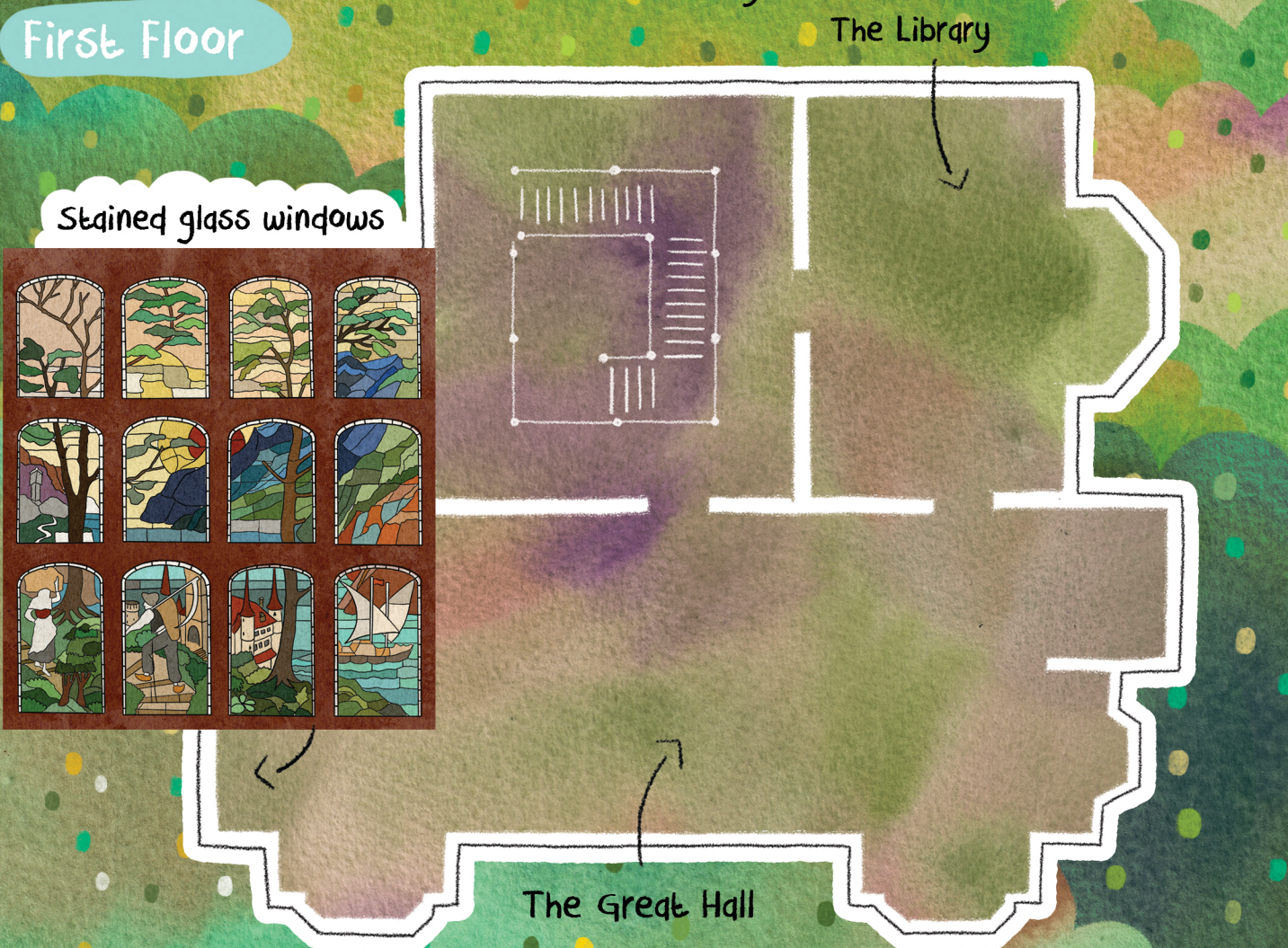
TWO
TEMPLE
PLACE

Explore Two Temple Place with us today!

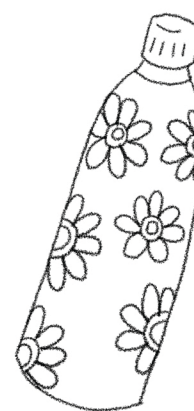
Ground Floor



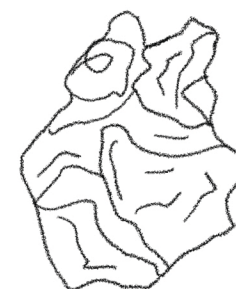
First Floor



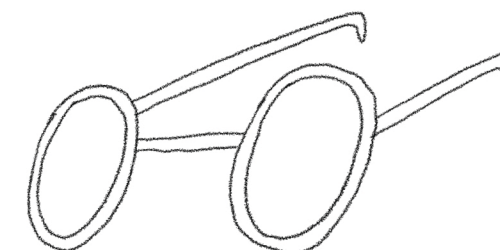
What have you brought with you today?



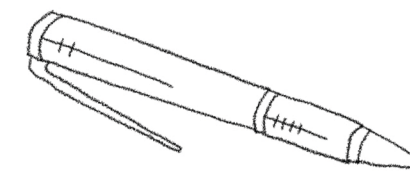
A water bottle



A wrinkled piece of paper



A pair of glasses



A pen

These are the things I found in my bag today.

Draw the things you have brought with you today.





William Waldorf Astor (1848 - 1919)

- The man who funded Two Temple Place-

Astor was born in New York City and came to live in Britain in 1891. In the 1700s, William Waldorf Astor's great grandfather, John Jacob Astor, ran a butcher's shop in a small town in Germany. The family was quite poor, and he emigrated from Germany to America in the 1780s to make his fortune. Astor inherited \$100,000,000, making him probably the richest man in the world.



John Loughborough Pearson (1817 - 1897)

-The man who designed Two Temple Place-

Astor commissioned the architect John Loughborough Pearson, one of the best craftsmen in the UK, to design Two Temple Place in 1892. The most luxurious and richest materials were used, and the total cost of the building was said to have been £250,000 (which equals to well over £30 million in today's money).

Ground Floor

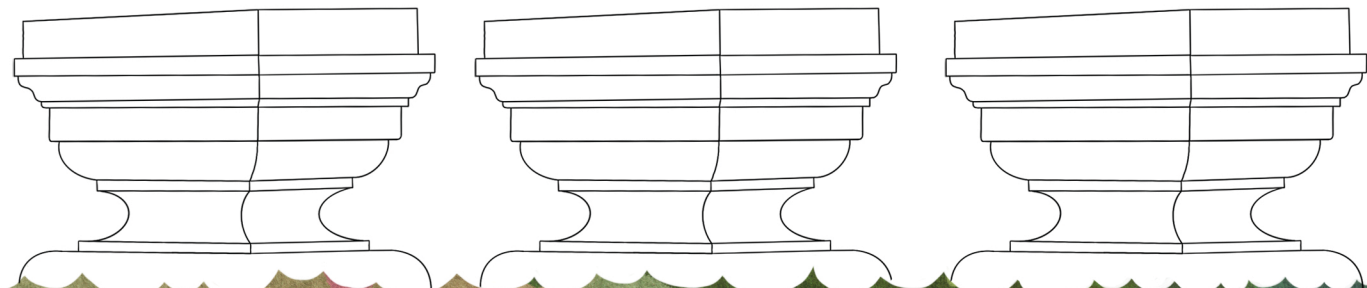
THE STAIRCASE HALL



The statues you see on the staircase are from "The Three Musketeers" by Alexandre Dumas, William Waldorf Astor's favourite novel.



Draw three characters from your favourite book or story!



Can you find:

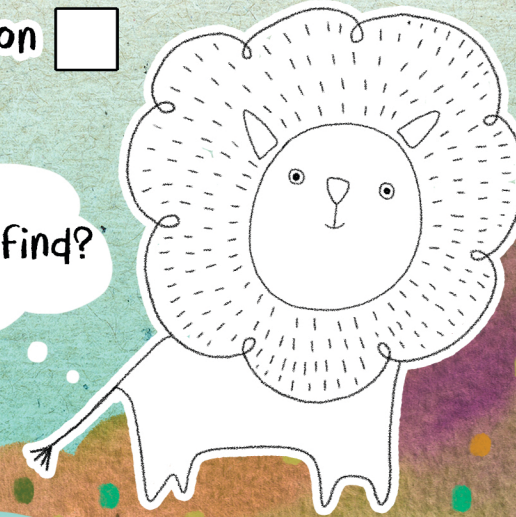
Lion

Shell

How many Lions can you find?

Colour me in!

Try looking under the staircase!



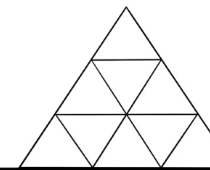
Marble Flooring

The semi-precious stones - marble, porphyry, onyx and jasper - are combined in complex geometrical Roman-inspired patterns, executed by Robert Davison.

What patterns can you find in the marble flooring?

1

2



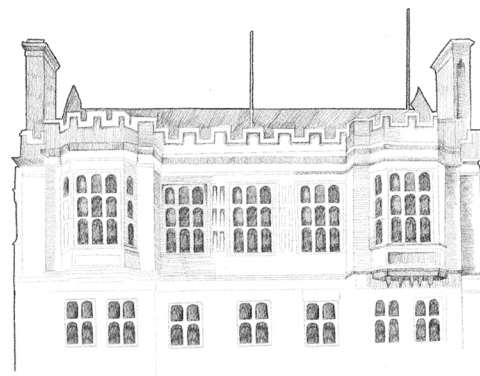
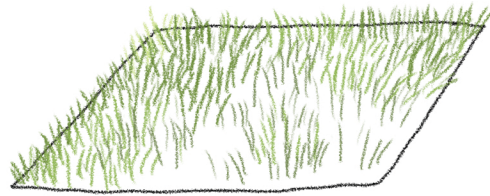
3

4

About Two Temple Place

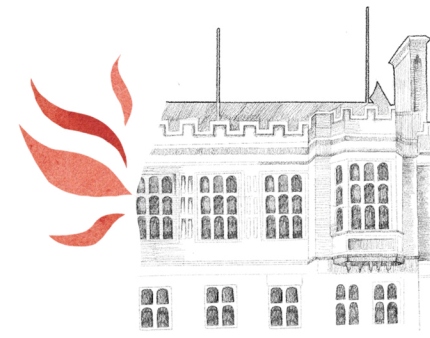
1892

William Waldorf Astor bought the land



1895

Building completed and known as Astor House



1944

The building was damaged during the second world war, with a flying bomb hitting the west side.

First Floor

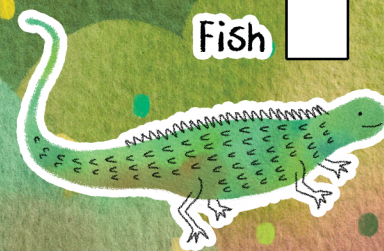
THE UPPER GALLERY

Look up at the stained-glass ceiling. The makers have included the date the building was completed. What other images can you find in the windows?

Every pattern and detail in this building is unique and nothing is repeated! Spend some time with the wood carvings on the wall and you might find:

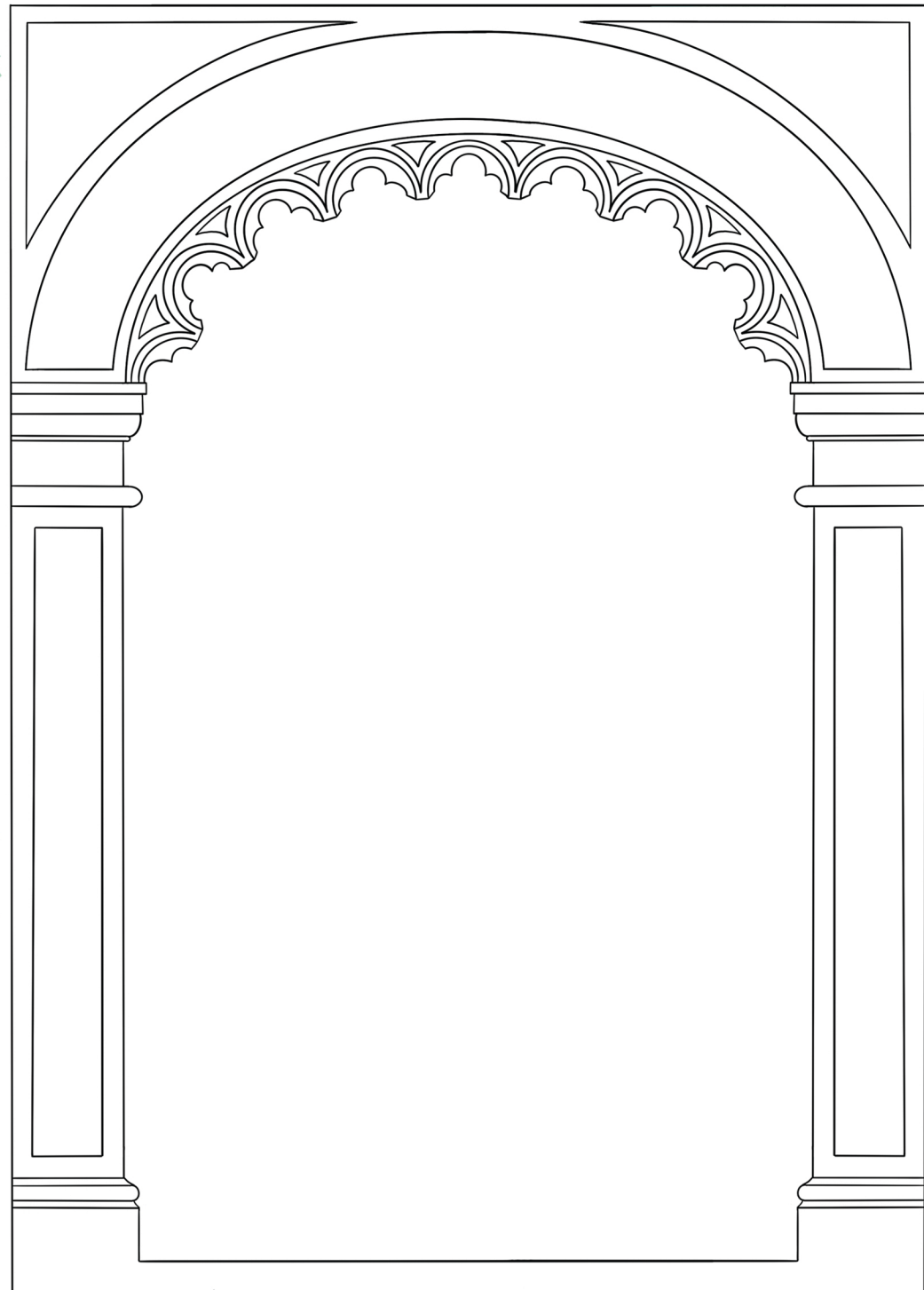


Fish



Lizard

Now design your own patterns!



THE LIBRARY

Can you find:

Bird



Bat



Butterfly



The library panelling is in satinwood, a lighter wood chosen because it could be polished to help reflect light into the room.

Word Search

| | | | | | | | | | | | | | | |
|---|---|---|---|---|---|---|---|---|---|---|---|---|---|---|
| X | L | A | N | Z | Q | I | C | S | A | K | E | W | S | R |
| M | O | Z | E | P | V | S | R | U | P | S | E | I | P | H |
| V | G | F | L | E | H | S | K | O | O | B | U | B | M | M |
| O | U | O | X | Q | C | S | E | E | K | S | T | C | X | I |
| Q | N | I | V | G | D | M | G | X | V | W | H | E | Z | U |
| G | R | M | Q | A | T | F | J | F | U | D | F | P | T | S |
| L | Y | S | Q | L | U | A | X | O | O | M | F | O | I | D |
| C | L | I | B | R | A | R | Y | O | P | Z | Y | C | F | Q |
| S | S | F | P | L | U | N | W | T | X | N | C | S | H | V |
| S | D | D | X | Z | E | N | T | A | Y | C | Z | O | E | Z |
| Z | D | N | Y | P | I | P | F | E | H | D | K | R | W | J |
| P | T | F | S | T | D | O | K | C | R | G | G | C | C | R |
| F | L | I | A | R | H | R | Y | S | R | N | F | I | R | D |
| L | E | S | L | V | E | I | K | N | Z | Z | L | M | S | J |
| T | N | E | M | U | R | T | S | N | I | J | X | L | O | E |

Microscope
Bookshelf
Satinwood
Lantern
Library
Instrument

Some words are spelled backwards!





Look up to see if you can spot them!

Pocahontas (1596 - 1617)

A Native American Princess, saved the life of John Smith, an early English colonist in Virginia, from her father, the Chief Powhatan.



Juliet

Heroine of Shakespeare's romantic tragedy Romeo and Juliet.



Marco Polo (1254 - 1324)

A Venetian merchant who travelled in Asia and published an account of the cultures he visited.

THE GREAT HALL

This was Astor's office, which he used for meetings, lectures and entertaining.

Stained glass windows

Did you notice the mountains in the background? Imagine Who might be living in the mountains.

Can you find:

Morgan le Fay (Woman playing harp)



Grumpy Cherub

Look closely at the benches. Can you find:

Little hood



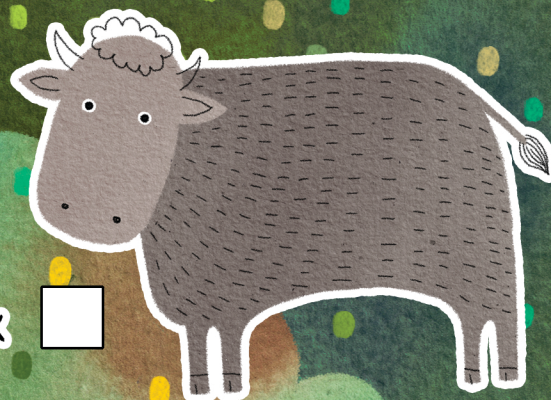
Mermaid

Try to look closely at the stained glass windows. Can you find:

Pink Flowers

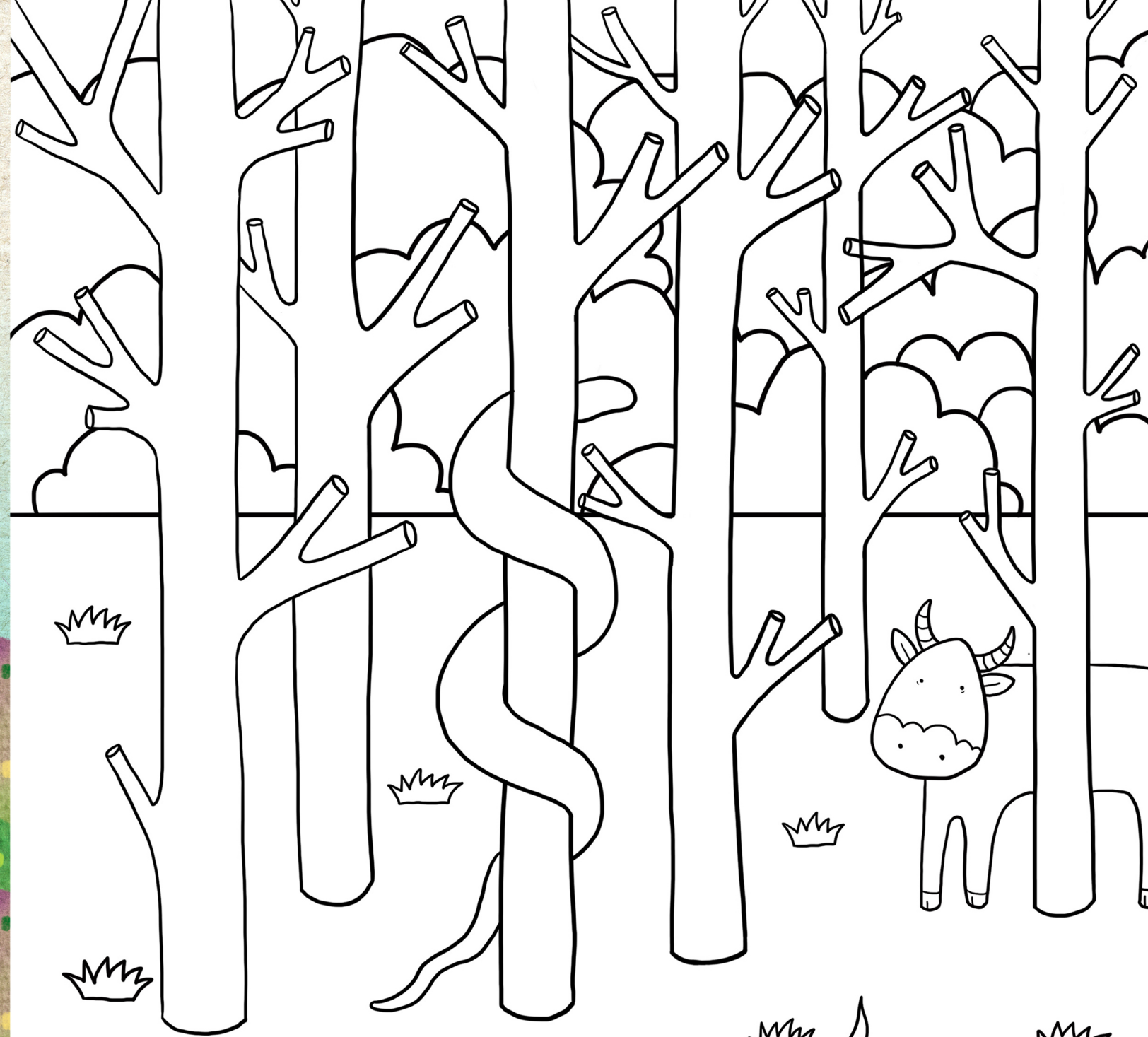
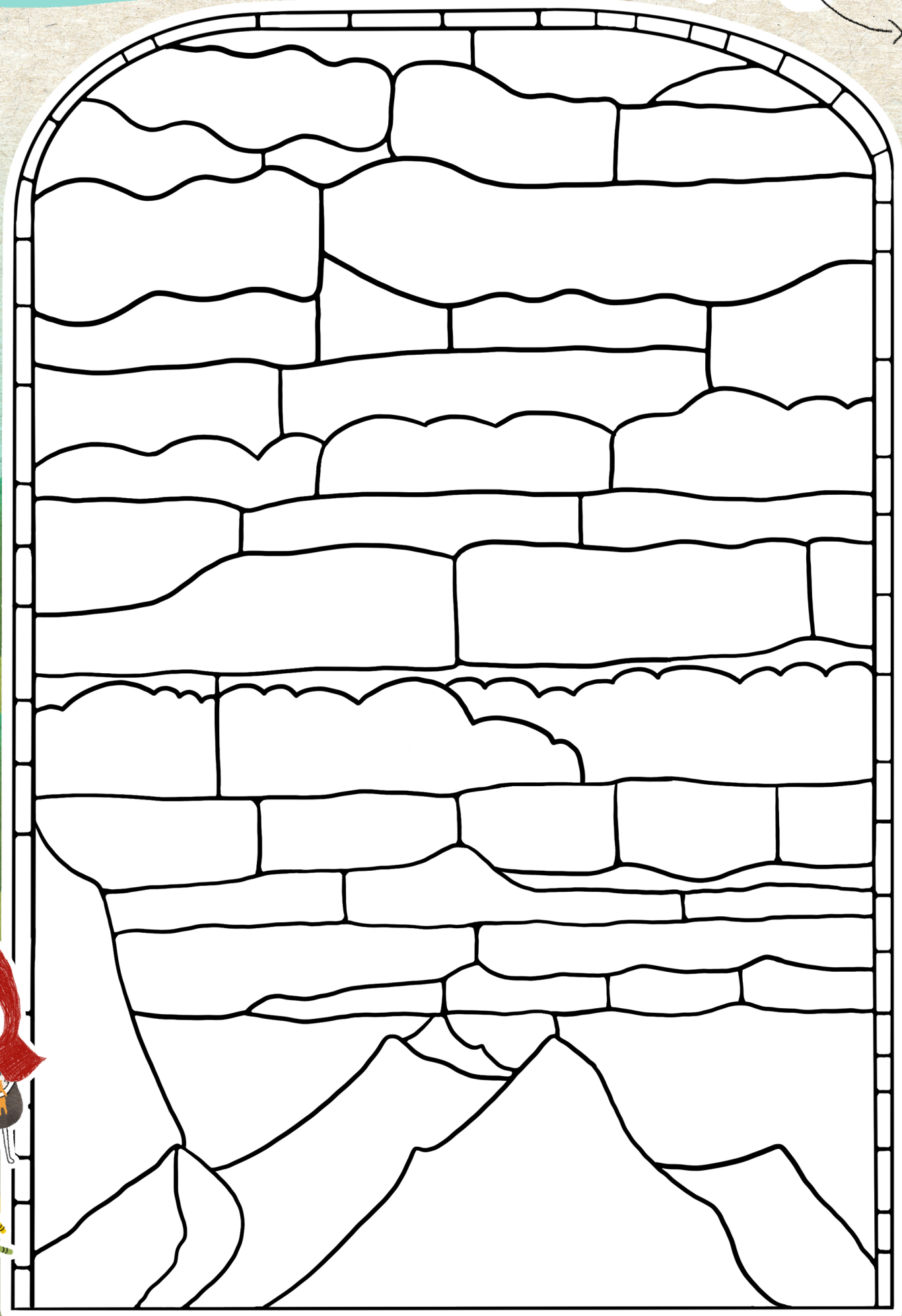


Grey Ox



Colour in your own stained glass window!

A Bonus colouring in page to do at home!





Share your Discoveries!



How many animals did you find today?



Draw your favourite animal or pattern from your visit to Two Temple Place today.

