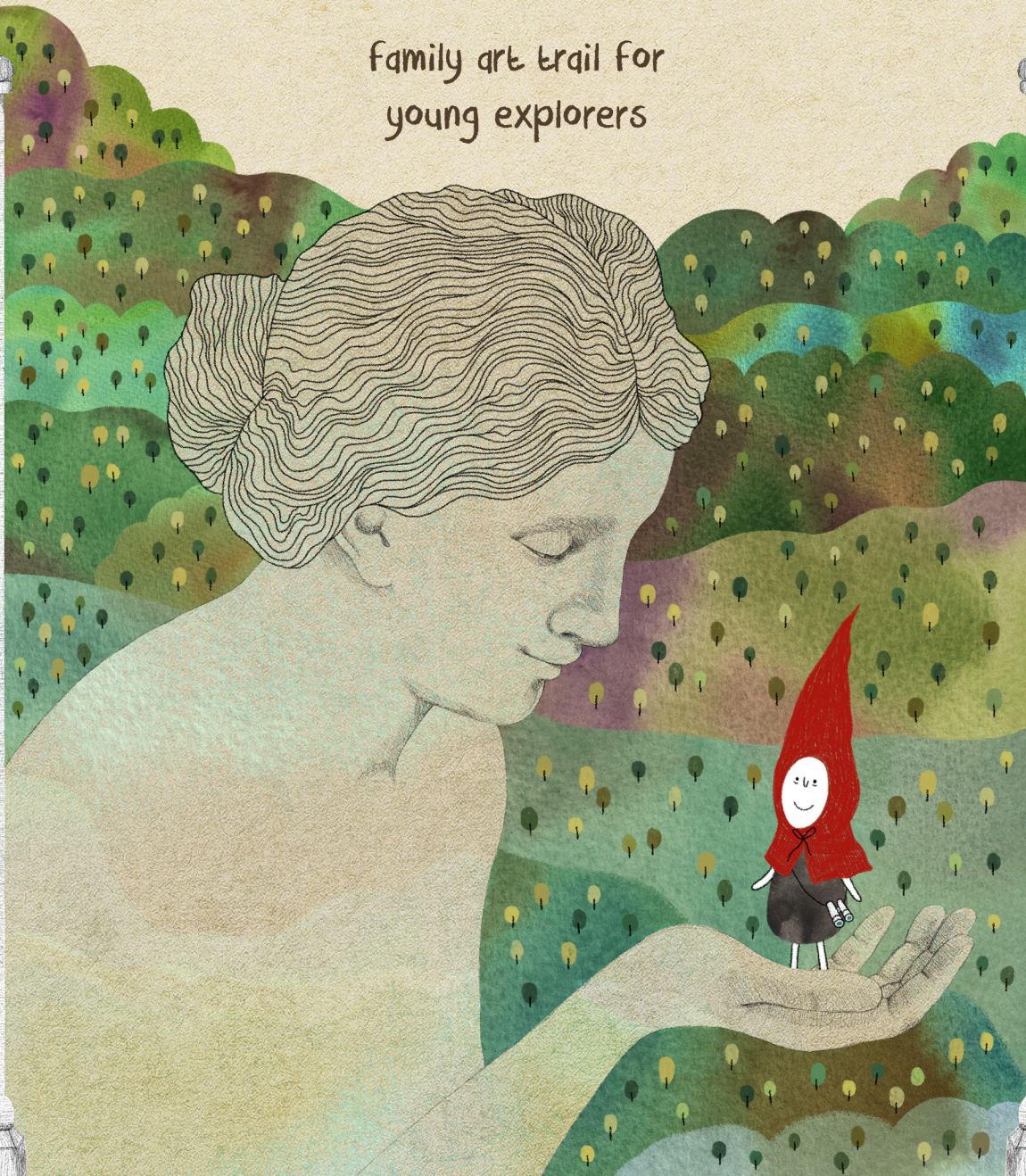


TWO TEMPLE PLACE

family art trail for
young explorers



Designed and illustrated by Edwina Kung

II TWO
TEMPLE
PLACE

Explore Two Temple Place with us today!

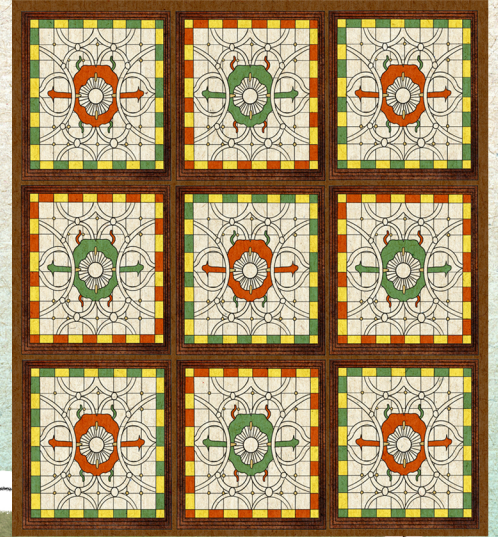
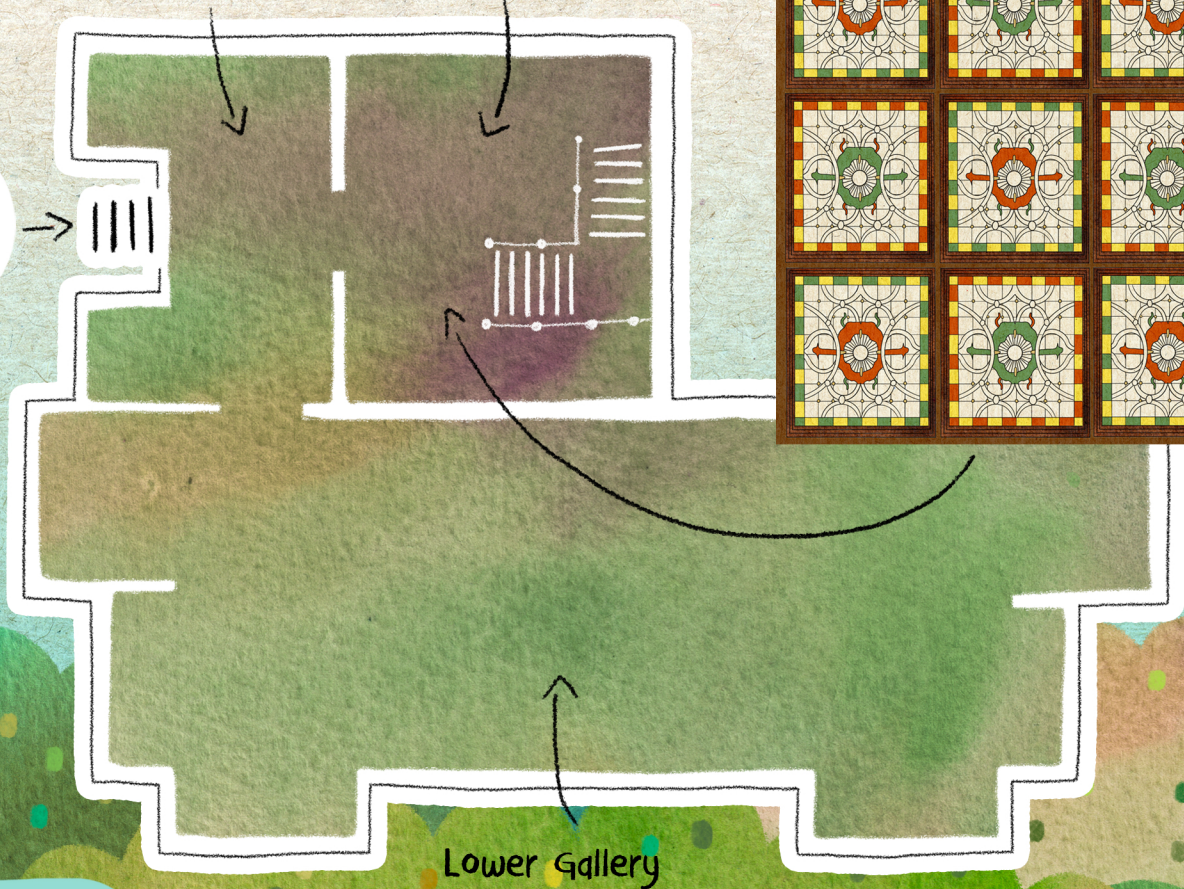
Ground Floor

Entrance

The Staircase Hall

Start your journey here!

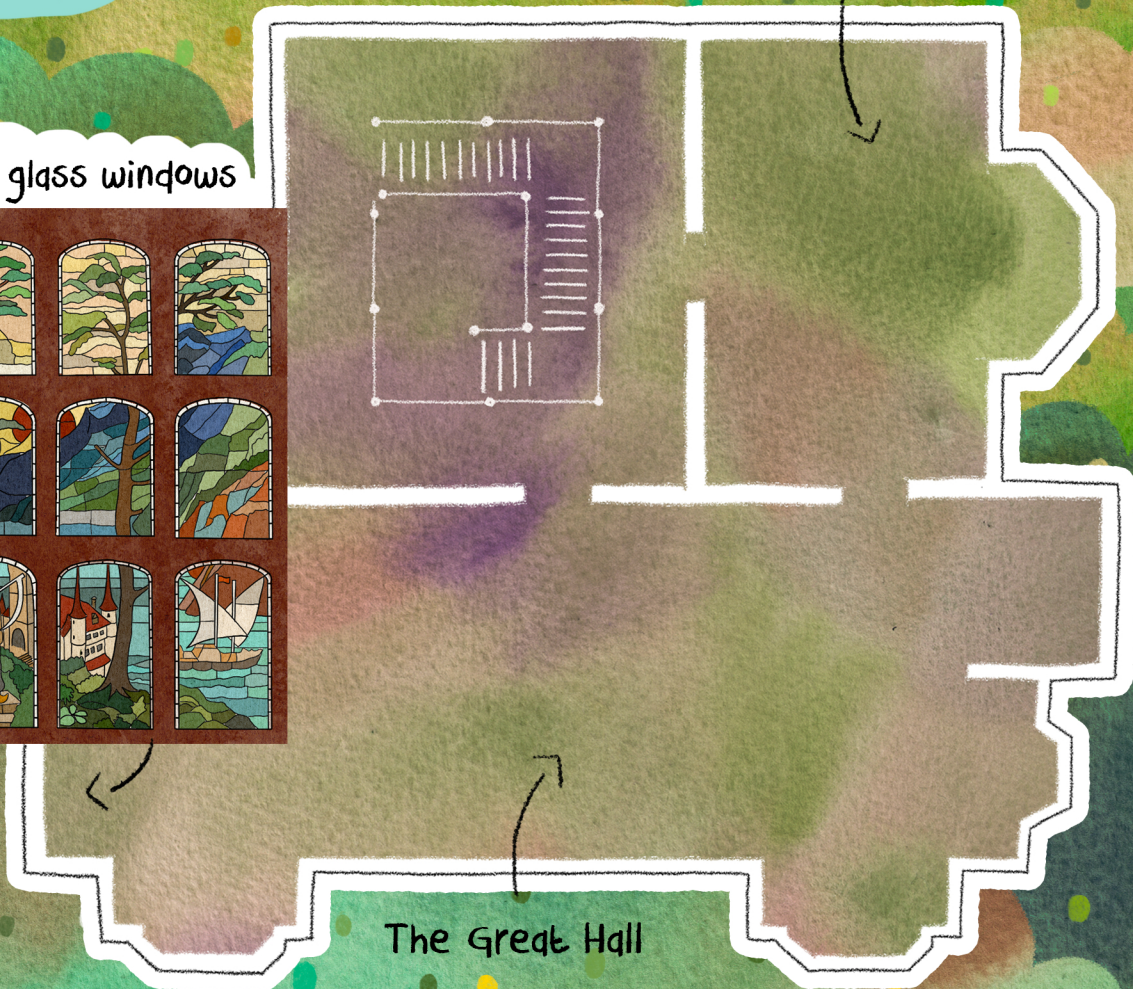
Stained glass ceiling



First Floor

The Library

Stained glass windows



The Great Hall

Little hood is exploring Two Temple Place with you today, draw what they have brought with them today using the lines below.

A key!



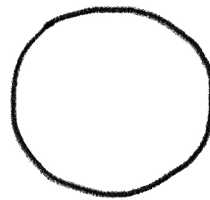
A toy cat!



A banana!



A pair of glasses!



A sock!?



Hello I am little hood!





William Waldorf Astor
(1848 - 1919)
The man who owned
Two Temple Place



John Loughborough Pearson
(1817 - 1897)
The man who designed
Two Temple Place

Ground Floor

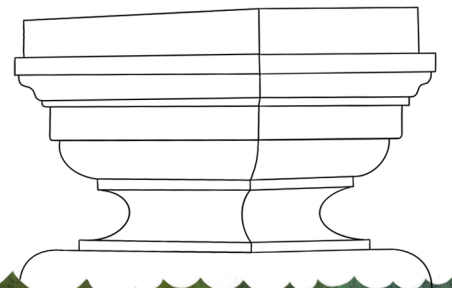
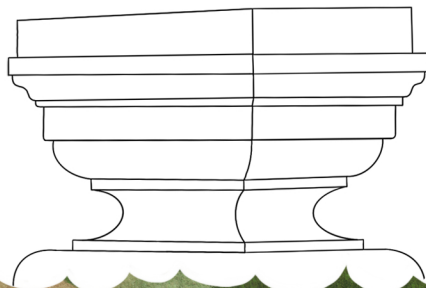
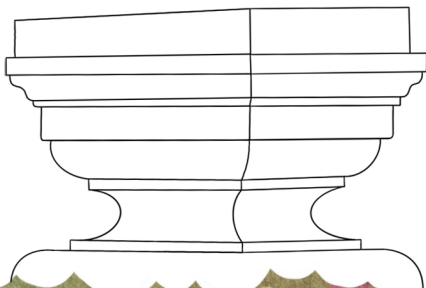
THE STAIRCASE HALL



The statues you see on the staircase are from "The Three Musketeers" by Alexandre Dumas, William Waldorf Astor's favourite book.



Draw three characters from your favourite book or story!



Colour me in!

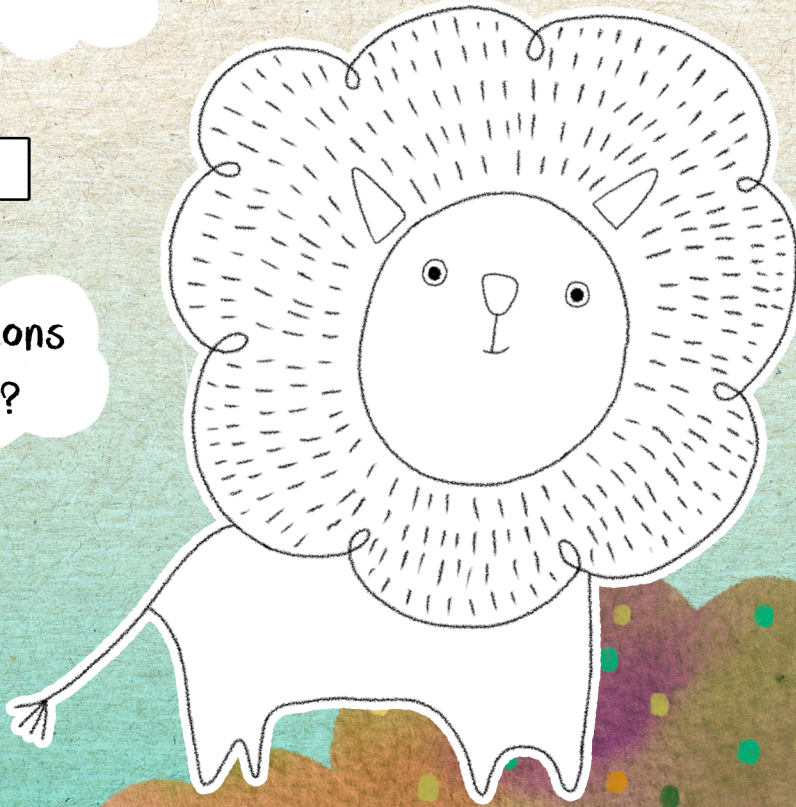
Can you find:

Lion

How many Lions
can you find?

Try looking under
the staircase!

Shell



Marble Flooring

What shapes can you find?

Fill in the space below with shapes you find in the marble flooring.

1



2

3

4

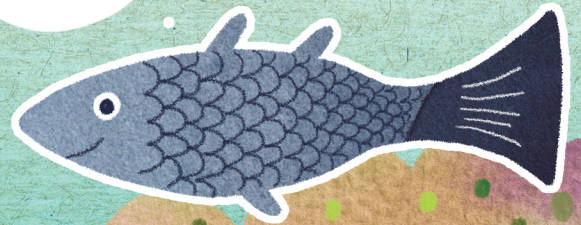
Look up! You will find lots of hidden animals!
Can you find them?

What do you think they are thinking about?
Draw your ideas here.



First Floor
**THE
UPPER
GALLERY**

Can you find:



Fish

Lizard

Word Search

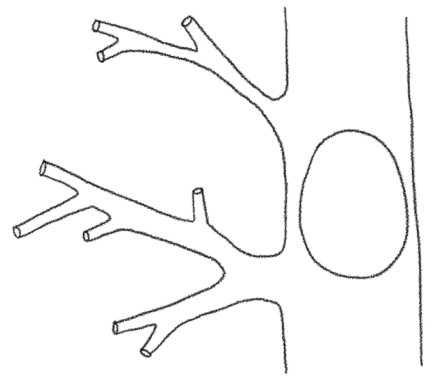
Book Globe
Dragon Lantern
Flute Net

E	P	Y	K	P	X	S	P	S	A
A	L	T	J	G	U	I	T	Z	B
T	E	Z	L	M	D	X	M	R	O
N	I	O	N	E	L	J	Y	O	O
U	B	J	T	V	N	A	Y	O	K
E	Y	O	N	H	M	S	F	C	U
F	W	U	N	O	G	A	R	D	O
K	B	U	U	J	J	M	V	I	B
L	L	A	N	T	E	R	N	X	C
R	A	F	L	U	T	E	L	L	U

See if you can
find them in
the library as
well!



I wonder if I'll meet any of my friends today.



THE LIBRARY

Can you find:

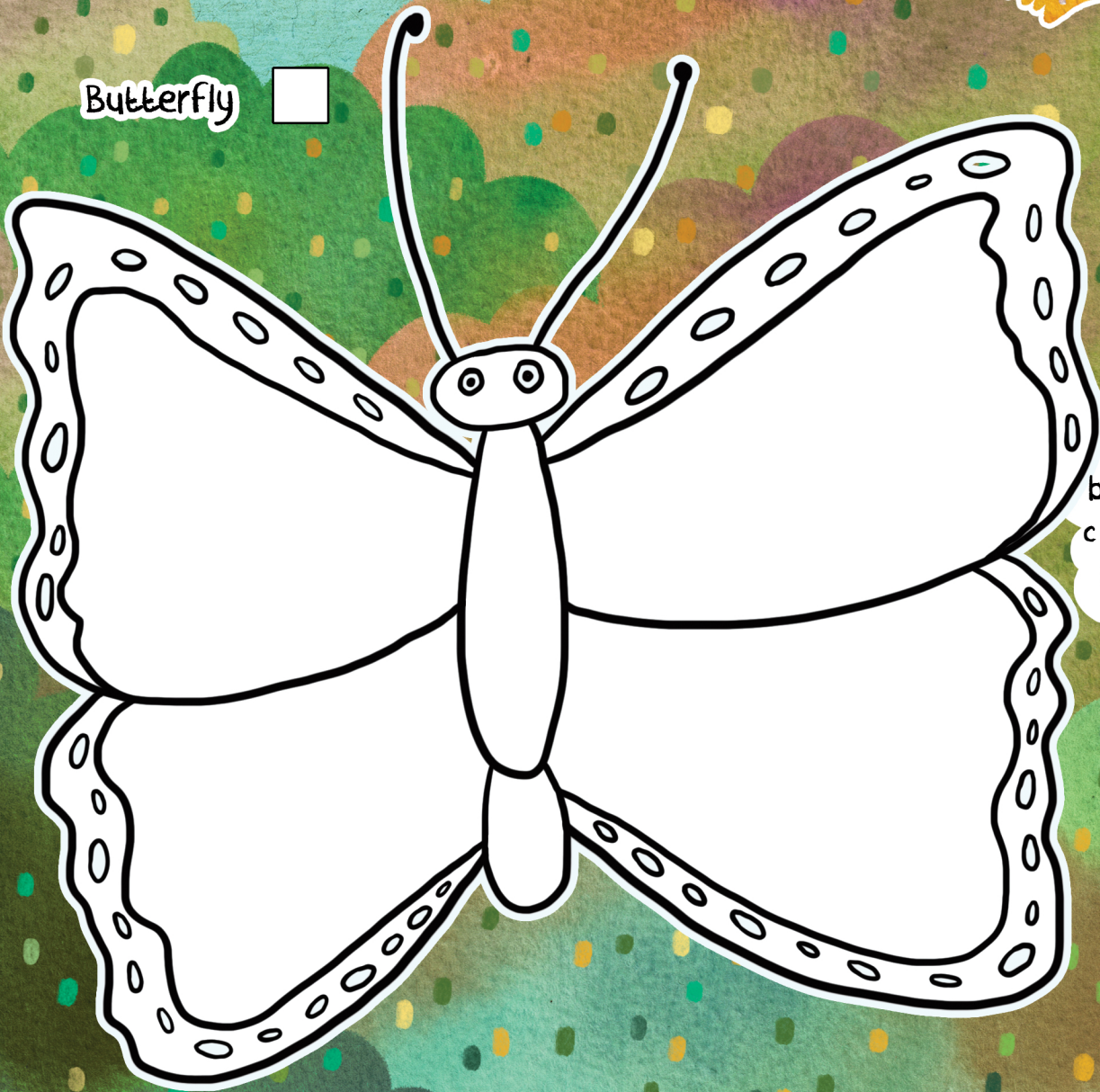


Bird



Bat

Butterfly



colour in the butterfly using colours you see in the building.



Stained glass windows

Did you notice how the sky changes in the two stained glass windows?

Fill in the missing letters to complete each word.

S U N R _ _ _

THE GREAT HALL

This was Astor's office, which he used for meetings, lectures and entertaining.

Can you find:

Morgan le Fay
(Woman playing harp)



Grumpy
Cherub

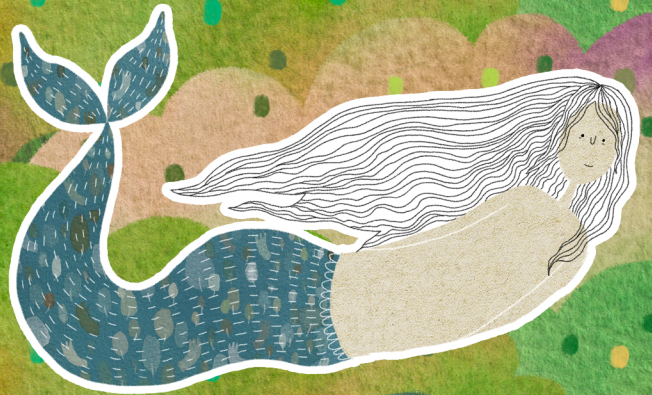


Look closely at the benches.
Can you find:

Little hood



Mermaid

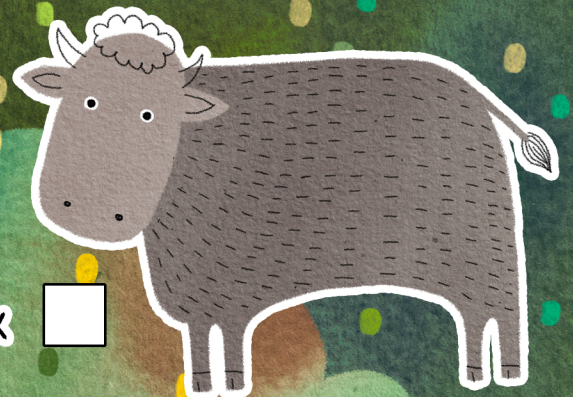


Try to look closely at the stained glass windows.
Can you find:

Pink Flowers



Grey Ox

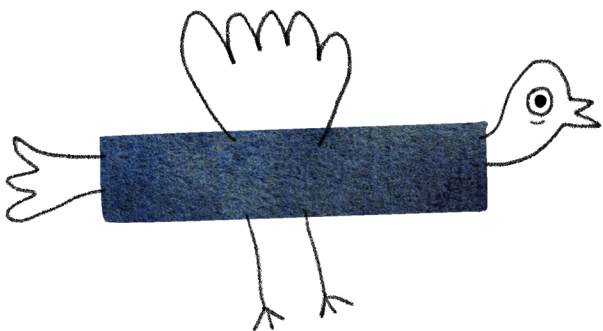
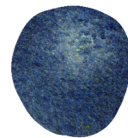
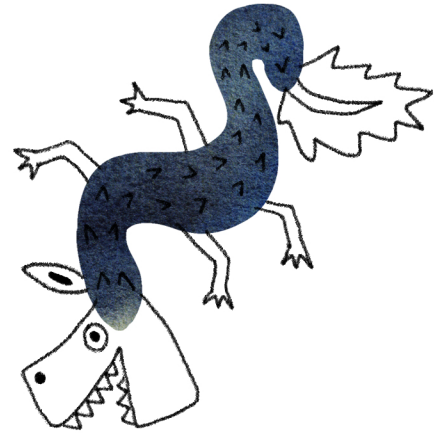




S U N S _ _



As well as animals, there are a lot of unusual creatures in the great hall,
draw your own creatures!



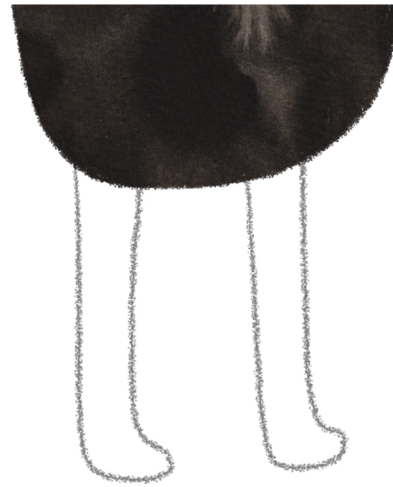
Look at the lovely mountains in the stain glass windows.
Draw some shoes for little hood to get them ready for a walk, based on the different seasons.

A Bonus colouring in page to do at home!

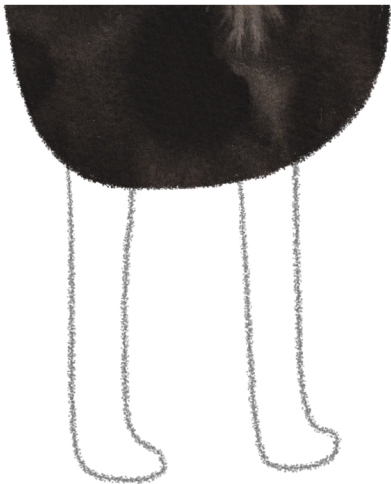
Spring



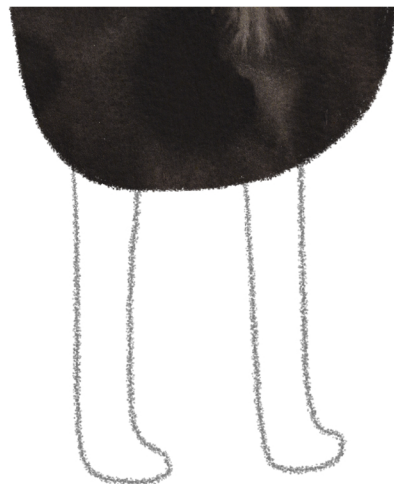
Summer

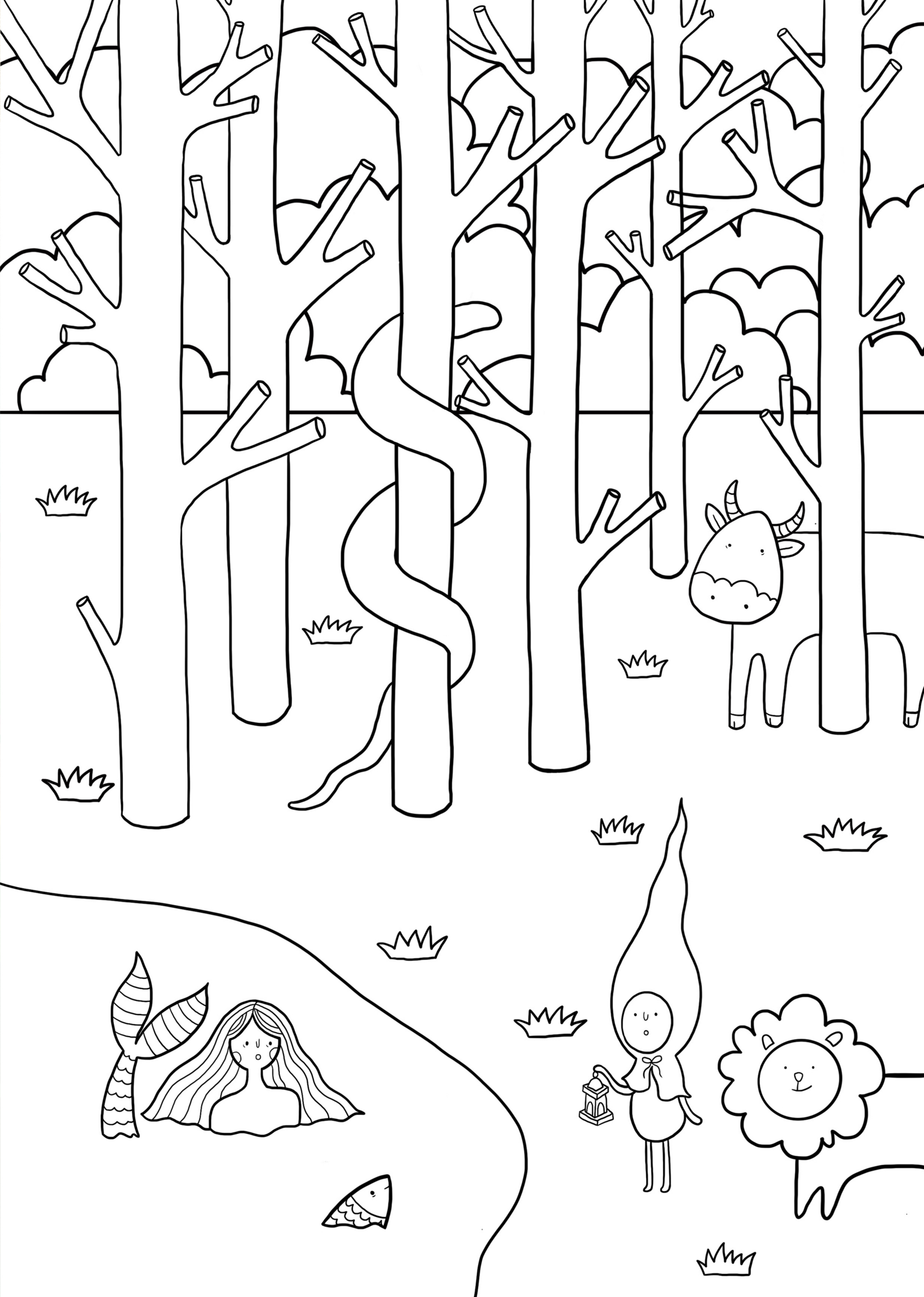


Autumn



Winter







Share your Discoveries!



How many animals did you find today?



Draw your favourite animal or pattern from your visit to Two Temple Place today.

